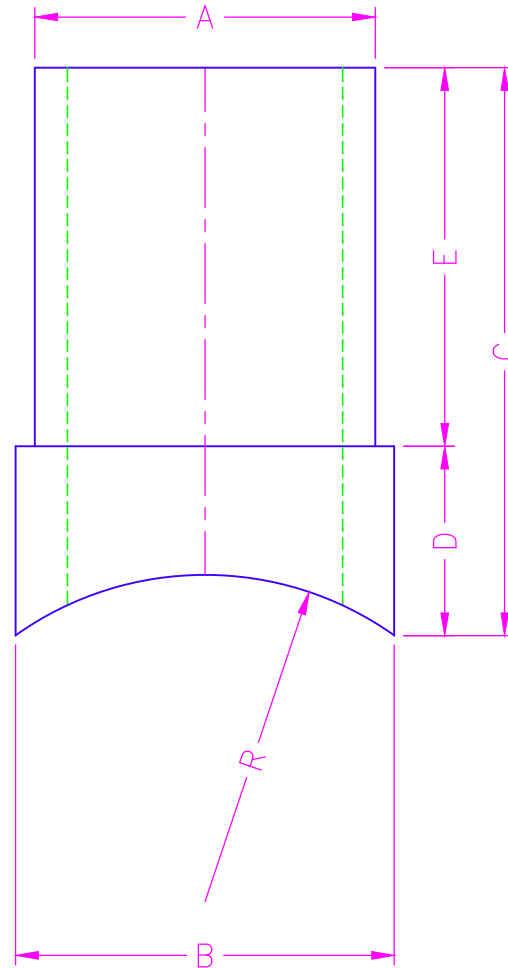


NOM. SIZE	SDR	APPROXIMATE					
		DIMENSIONS / WEIGHT					
		WPR	A	B	C	D	E
2	7	335	2 3/8	2.650	7.600	1.500	5.850
	9	252					
	11	200					
	17	125					
3	7	335	3 1/2	4.000	5.875	2.125	4.875
	9	252					
	11	200					
	17	125					
4	7	335	4 1/2	5.000	7.500	2.500	4.800
	9	252					
	11	200					
	17	125					
6	7	335	6 5/8	7.375	10.000	3.000	6.625
	9	252					
	11	200					
	17	125					
8	7	335	8 5/8	9.250	11.000	4.250	6.575
	9	252					
	11	200					
	17	125					

REVISION HISTORY			
REV	DESCRIPTION	DATE	NAME

NOTES
1. TOLERANCES +/- 2".
2. ANGLE TOLERANCES +/- 2.0'.
3. MADE FROM HDPE SIZE SPECIFIC PIPE.
4. FOLLOW INDUSTRY STANDARD FUSION PROCEDURES.
5. FOLLOW INDUSTRY STANDARD QUALITY PROCEDURES.
6. CUSTOM DESIGN AVAILABLE.
7. IF SPECIFIC DIMENSIONS NEEDED, PLEASE CALL.
8. LARGER SIZES AVAILABLE UPON REQUEST.
9. WPR BASED ON PE 4710 FOR WATER AT 73° F.
10. MOLDED FITTINGS MFG BY AGRU, PERFORMANCE PIPE, CENTRAL PLASTICS.
CONFIDENTIAL NOTICE / CONTROLLED DOCUMENT
Dissemination of this information contained herein is prohibited



SECOR

17321 GROESCHKE ROAD HOUSTON, TX. 77084
 PH. # 281-556-1661 FAX# 281-556-1683

TITLE:				
BRANCH SADDLE				
DATE:	DRAWN BY:	CHECKED BY:	DWG. NO.	REV.
07/07/15	PATRICK O'GRADY	JUSTIN KEYS		A