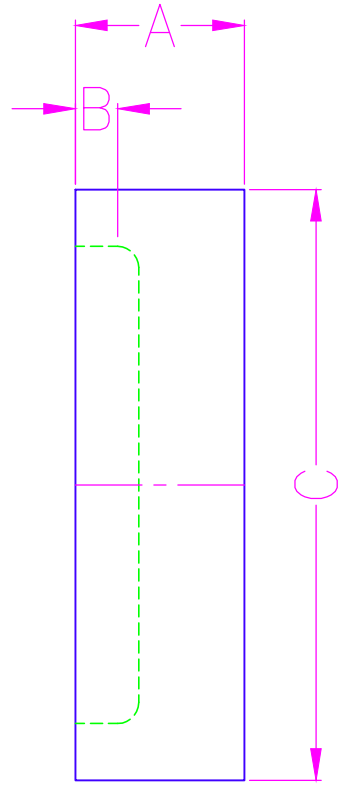


NOMINAL SIZE	SDR	APPROXIMATE			
		DIMENSIONS / WEIGHT			
		WPR	A	B	C
8	11	200	4	1	8.625
	17	160			
	21	100			
	32.5	65			
10	11	200	4	1	10.75
	17	160			
	21	100			
	32.5	65			
12	11	200	4	1	12.75
	17	160			
	21	100			
	32.5	65			
14	11	200	4	1	14
	17	160			
	21	100			
	32.5	65			
16	11	200	4	1	16
	17	160			
	21	100			
	32.5	65			
18	11	200	4	1	18
	17	160			
	21	100			
	32.5	65			
20	11	200	4	1	20
	17	160			
	21	100			
	32.5	65			
22	11	200	4	1	22
	17	160			
	21	100			
	32.5	65			
24	11	200	4	1	24
	17	160			
	21	100			
	32.5	65			

REVISION HISTORY			
REV	DESCRIPTION	DATE	NAME

NOTES
1. TOLERANCES +/- 2".
2. ANGLE TOLERANCES +/- 2.0'.
3. MADE FROM HDPE SIZE SPECIFIC PIPE.
4. FOLLOW INDUSTRY STANDARD FUSION PROCEDURES.
5. FOLLOW INDUSTRY STANDARD QUALITY PROCEDURES.
6. CUSTOM DESIGN AVAILABLE.
7. IF SPECIFIC DIMENSIONS NEEDED, PLEASE CALL.
8. LARGER SIZES AVAILABLE UPON REQUEST.
9. WPR BASED ON PE 4710 FOR WATER AT 73° F.
CONFIDENTIAL NOTICE / CONTROLLED DOCUMENT
Dissemination of this information contained herein is prohibited

FOR HIGHER PRESSURE APPLICATIONS USING SDR7 OR SDR9, PLEASE CALL FOR AVAILABLE FITTINGS



<h1>SECOR</h1>	TITLE: END CAP FABRICATED BY SECOR				
	17321 GROESCHKE ROAD HOUSTON, TX. 77084 PH. # 281-556-1661 FAX# 281-556-1683	DATE: 3/24/15	DRAWN BY: PATRICK O'GRADY	CHECKED BY:	DWG. NO.