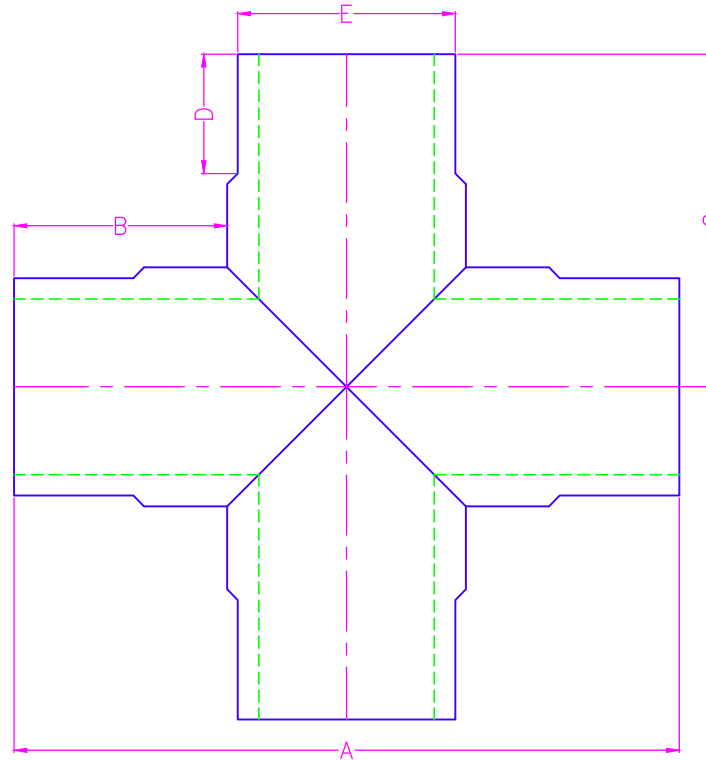


NOMINAL SIZE	SDR	APPROXIMATE DIMENSIONS (in.) / WEIGHT					
		WPR	A	B	C	D	E
		7	335	25 1/2	10 1/2	12 3/4	4
9	252						
11	200						
17	125						
6	7	335	27 5/8	10 1/2	13 13/16	4.5	6.625
	9	252					
	11	200					
	17	125					
8	7	335	30 5/8	11	15 5/16	6	8.625
	9	252					
	11	200					
	17	125					
10	7	335	33 3/4	11 1/2	16 7/8	7	10.75
	9	252					
	11	200					
	17	125					
12	7	335	37 3/4	12 1/2	18 7/8	7	12.75
	9	252					
	11	200					
	17	125					
14	7	335	42	14	21	7	14
	9	252					
	11	200					
	17	125					
16	7	335	44	14	22	7	16
	9	252					
	11	200					
	17	125					
18	7	335	46	14	23	8	18
	9	252					
	11	200					
	17	125					
20	7	335	48	14	24	9	20
	9	252					
	11	200					
	17	125					
22	7	335	52	15	26	9	22
	9	252					
	11	200					
	17	125					
24	7	335	56	16	28	10	24
	9	252					
	11	200					
	17	125					

REVISION HISTORY			
REV	DESCRIPTION	DATE	NAME

NOTES
1. TOLERANCES +/- 2".
2. ANGLE TOLERANCES +/- 2.0'.
3. MADE FROM HDPE SIZE SPECIFIC PIPE.
4. FOLLOW INDUSTRY STANDARD FUSION PROCEDURES.
5. FOLLOW INDUSTRY STANDARD QUALITY PROCEDURES.
6. CUSTOM DESIGN AVAILABLE.
7. IF SPECIFIC DIMENSIONS NEEDED, PLEASE CALL.
8. LARGER SIZES AVAILABLE UPON REQUEST.
9. WPR BASED ON PE 4710 FOR WATER AT 73° F.
<b>CONFIDENTIAL NOTICE / CONTROLLED DOCUMENT</b>
*Dissemination of this information contained herein is prohibited*



<h1>SECOR</h1>	TITLE: FULL FLOW EQUAL CROSS FABRICATED BY SECOR				
	17321 GROESCHKE ROAD HOUSTON, TX. 77084 PH. # 281-556-1661 FAX# 281-556-1683	DATE: 3/24/15	DRAWN BY: PATRICK O'GRADY	CHECKED BY:	DWG. NO.