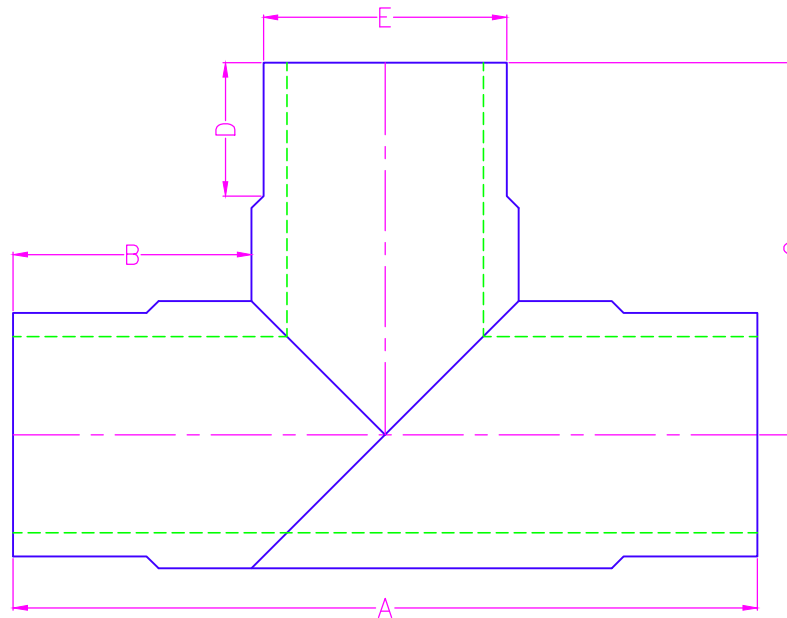


NOMINAL SIZE	SDR	APPROXIMATE				
		DIMENSIONS (in.) / WEIGHT				
		WPR	A	B	C	D
4	7	335	25 1/2	8	4.5	4
	9	252				
	11	200				
	17	125				
6	7	335	27	9	6.625	4.5
	9	252				
	11	200				
	17	125				
8	7	335	32 1/4	12 1/2	8.625	6
	9	252				
	11	200				
	17	125				
10	7	335	33	12 1/2	10.75	7
	9	252				
	11	200				
	17	125				
12	7	335	33 1/2	12 1/2	12.75	7
	9	252				
	11	200				
	17	125				
14	7	335	36 1/4	14 1/2	14	7
	9	252				
	11	200				
	17	125				
16	7	335	36 3/4	14 1/2	16	7
	9	252				
	11	200				
	17	125				
18	7	335	37 3/4	15	18	8
	9	252				
	11	200				
	17	125				
20	7	335	38 1/2	15	20	9
	9	252				
	11	200				
	17	125				
22	7	335	40	16	22	9
	9	252				
	11	200				
	17	125				
24	7	335	42 3/4	18	24	10
	9	252				
	11	200				
	17	125				

REVISION HISTORY			
REV	DESCRIPTION	DATE	NAME

NOTES
1. TOLERANCES +/- 2". 2. ANGLE TOLERANCES +/- 2.0'. 3. MADE FROM HDPE SIZE SPECIFIC PIPE. 4. FOLLOW INDUSTRY STANDARD FUSION PROCEDURES. 5. FOLLOW INDUSTRY STANDARD QUALITY PROCEDURES. 6. CUSTOM DESIGN AVAILABLE. 7. IF SPECIFIC DIMENSIONS NEEDED, PLEASE CALL. 8. LARGER SIZES AVAILABLE UPON REQUEST. 9. WPR BASED ON PE 4710 FOR WATER AT 73° F. 10. PIG BARS INSTALLED UPON REQUEST.
CONFIDENTIAL NOTICE / CONTROLLED DOCUMENT
<i>*Dissemination of this information contained herein is prohibited*</i>



<h1 style="color: red; margin: 0;">SECOR</h1>	TITLE: FULL FLOW EQUAL TEE FABRICATED BY SECOR			
	17321 GROESCHKE ROAD HOUSTON, TX. 77084 PH. # 281-556-1661 FAX# 281-556-1683	DATE: 3/24/15	DRAWN BY: PATRICK O'GRADY	CHECKED BY:
				REV. A