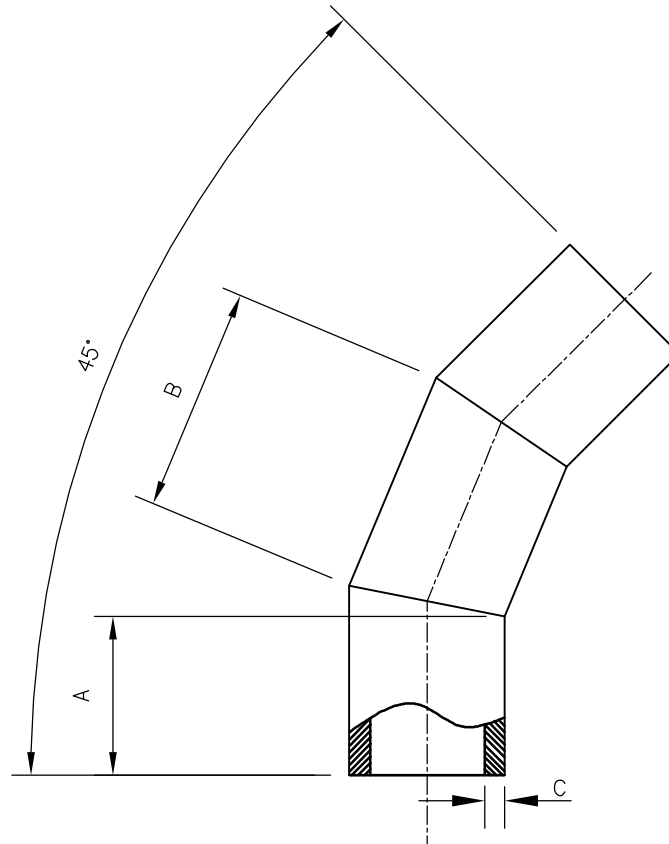


### DIMENSIONAL DATA

SIZE IPS	TRUE O.D.	A	B	C
4	4.50	6.00	8.00	.61
6	6.625	6.00	9.50	.90
8	8.625	6.50	11.00	1.18
10	10.75	6.50	14.00	1.47
12	12.75	8.00	15.00	1.74
14	14.00	9.00	15.50	1.91
16	16.00	9.00	16.50	2.19
18	18.00	9.00	17.50	2.46
20	20.00	9.00	18.50	2.74
22	22.00	9.00	19.50	3.01
24	24.00	10.00	20.00	3.28



### NOTES

1. TOLERANCES +/- 2.0" FOR DIMENSION "A" & "B" ONLY.
2. ANGLE TOLERANCES +/- 2.0'.
3. CLASS 200 - SDR.9 RATED.
4. REF. "C" MINIMUM WALL THICKNESS.
5. USE SDR.7 PIPE.
6. ENDS COUNTERBORED IF REQUESTED.
7. USE APPROVED VENDORS.
  - WL PLASTICS
  - INDEPENDENT PIPE
  - POLY PIPE
8. FOLLOW SECOR FUSION PROCEDURES.
9. FOLLOW SECOR QUALITY PROCEDURES.
10. NOTIFY FM APPROVALS OF CHANGES.
11. CUSTOM DESIGN AVAILABLE.

## SECOR

17321 GROESCHKE ROAD HOUSTON, TX. 77084  
PH. # 281-556-1661 FAX# 281-556-1683

45° ELL. 3 SEGMENT  
CLASS 200

CUSTOM LENGTH "A": \_\_\_\_\_ CUSTOM LENGTH "B": \_\_\_\_\_

**CONFIDENTIAL NOTICE / CONTROLLED DOCUMENT**

\*Dissemination of this information contained herein is prohibited\*

DATE:	DRAWN BY:	CHECKED BY:	DWG. NO.	REV.
3/6/10	CRAIG STEVENS	DAVID NIX	SEC-511-03-200	D