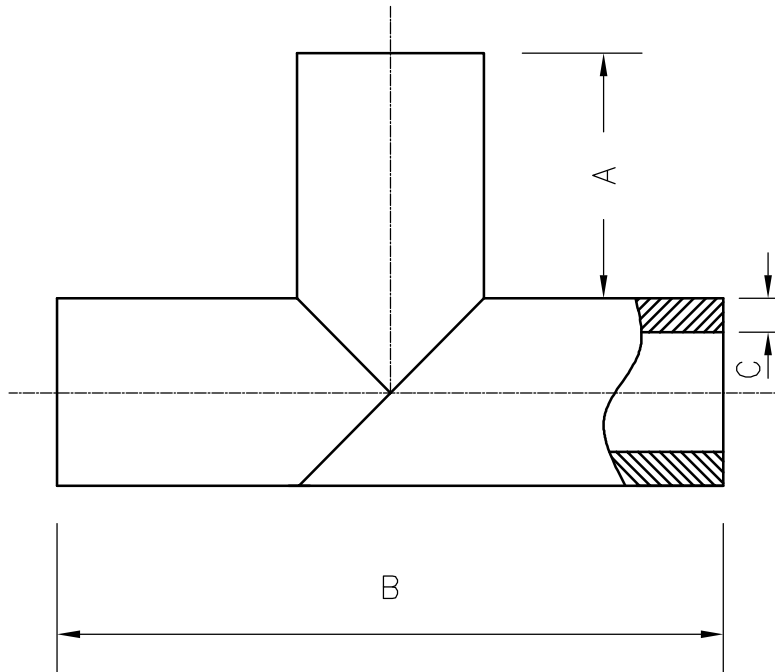


### DIMENSIONAL DATA

SIZE IPS	TRUE O.D.	A	B	C MIN. WALL
4	4.50	5.50	15.00	.64
6	6.625	6.00	18.00	.94
8	8.625	8.50	25.50	1.23
10	10.75	8.50	27.00	1.53
12	12.75	9.50	30.00	1.82
14	14.00	10.00	32.00	2.00
16	16.00	11.00	36.00	2.28
18	18.00 </td <td>11.00</td> <td>38.00</td> <td>2.57</td>	11.00	38.00	2.57
20	20.00	12.00	40.00	2.85
22	22.00	13.00	44.00	3.14
24	24.00	13.00	46.00	3.42



### NOTES

1. TOLERANCES +/- 2.0" FOR DIMENSION "A" & "B" ONLY.
2. ANGLE TOLERANCES +/- 2.0'.
3. CLASS 200 - SDR.9 RATED.
4. REF. "C" MINIMUM WALL THICKNESS.
5. USE SDR.9 PIPE.
6. ENDS COUNTERBORED IF REQUESTED.
7. USE APPROVED VENDORS FOR PIPE.
  - WL PLASTICS
  - INDEPENDENT PIPE
  - POLY PIPE
8. FOLLOW SECOR FUSION PROCEDURES.
9. FOLLOW SECOR QUALITY PROCEDURES.
10. NOTIFY FM APPROVALS OF CHANGES.
11. CUSTOM DESIGN AVAILABLE.

# SECOR

17321 GROESCHKE ROAD HOUSTON, TX. 77084  
PH. # 281-556-1661 FAX# 281-556-1683

FABRICATED EQUAL TEES  
CLASS 200

DATE:	DRAWN BY:	CHECKED BY:	DWG. NO.	REV.
3/7/10	CRAIG STEVENS	DAVID NIX	SEC-513-F-200	D

CUSTOM LENGTH "A": \_\_\_\_\_ CUSTOM LENGTH "B": \_\_\_\_\_

**CONFIDENTIAL NOTICE / CONTROLLED DOCUMENT**

\*Dissemination of this information contained herein is prohibited\*