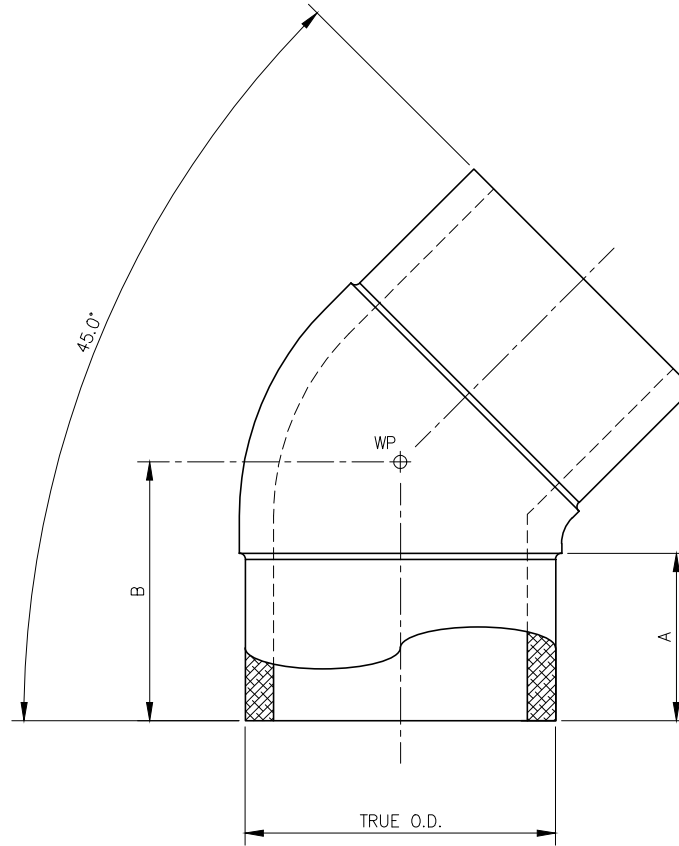


DIMENSIONS					
SIZE IPS	SDR	WPR	TRUE O.D.	A	B
2	7	336	2.375	2.40	4.20
	9	252		2.40	4.20
	11	200		2.52	3.23
	17	126		2.52	3.23
3	7	336	3.375	3.13	5.00
	9	252		3.13	5.00
	11	200		3.13	5.00
	17	126		3.13	5.00
4	7	336	4.50	3.00	5.00
	9	252		3.00	5.00
	11	200		3.88	5.00
	17	126		3.90	7.10
6	7	336	6.625	4.38	7.00
	9	252		4.38	7.00
	11	200		4.96	7.00
	17	126		4.96	9.00
8	7	336	8.625	6.00	11.00
	9	252		6.00	11.00
	11	200		6.56	11.00
	17	126		6.56	11.45
10	7	336	10.75	—	—
	9	252		6.00	13.25
	11	200		6.00	13.25
	17	126		6.00	13.25
12	7	336	12.75	—	—
	9	252		7.50	15.75
	11	200		7.50	15.75
	17	126		7.50	15.75



**45° ELBOW**  
SCALE: NTS

**NOTES**

1. ALL DIMENSIONS ARE IN INCHES.
2. FITTINGS ARE MANUFACTURED AND TESTED TO THE REQUIREMENTS OF ASTM D2513 AND ASTM D2683.
3. FITTINGS ARE MOLDED FROM VIRGIN BLACK HIGH DENSITY RESIN IN ACCORDANCE WITH ASTM D3350.
4. FITTINGS MEET AWWA C906 TESTING REQUIREMENTS.
5. FITTINGS ARE ASTM D3261 AND NSF-61 APPROVED.
6. FITTINGS PRESSURE RATED FOR NATURAL GAS AND POTABLE WATER.
7. DIMENSIONAL TOLERANCE: +/- 2".
8. ANGLE TOLERANCES: +/- 2.0'.

REV	DESCRIPTION	DATE	NAME
A	ISSUED FOR CLIENT REVIEW	—	CMG

**SECOR**

17321 GROESCHKE ROAD HOUSTON, TX. 77084  
PH.# 281-556-1661 FAX# 281-556-1683

CONFIDENTIAL NOTICE / CONTROLLED DOCUMENT  
\*Dissemination of this information contained herein is prohibited\*

TITLE: SECOR  
IPS MOLDED FITTING  
45° ELBOW

DATE	DRAWN BY	CHECKED BY	DRAWING NO.	REV
10/15/20	CMG	—	—	A