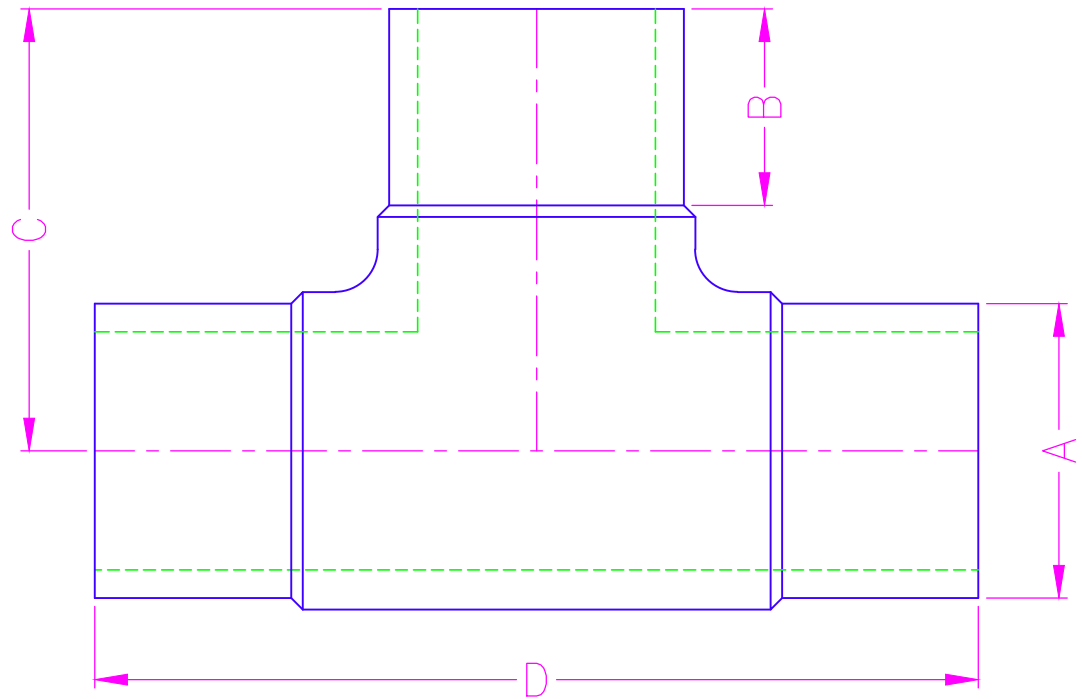


NOMINAL SIZE	SDR	APPROXIMATE				
		DIMENSIONS / WEIGHT				
		WPR	A	B	C	D
2	-	-	2 3/8	2.88	5.13	10.25
	9	252				
	11	200				
	-	-				
3	7	335	3 1/2	3.00	6.06	12.13
	9	252		3.00	5.72	11.44
	11	200				
	17	125				
4	7	335	4 1/2	3.00	6.22	12.44
	9	252		3.00	6.75	13.50
	11	200				
	17	125				
6	7	335	6 5/8	4.25	8.63	17.25
	9	252		4.06	8.31	16.62
	11	200				
	17	125				
8	7	335	8 5/8	6.00	12.09	24.18
	9	252				
	11	200				
	17	125				
10	-	-	10 3/4	6.30	13.78	27.56
	-	-				
	11	200				
	17	125				
12	-	-	12 3/4	7.52	15.97	31.94
	-	-				
	11	200				
	17	125				

REVISION HISTORY			
REV	DESCRIPTION	DATE	NAME

NOTES
1. TOLERANCES +/- 2".
2. ANGLE TOLERANCES +/- 2.0'.
3. MADE FROM HDPE SIZE SPECIFIC PIPE.
4. FOLLOW INDUSTRY STANDARD FUSION PROCEDURES.
5. FOLLOW INDUSTRY STANDARD QUALITY PROCEDURES.
6. CUSTOM DESIGN AVAILABLE.
7. IF SPECIFIC DIMENSIONS NEEDED, PLEASE CALL.
8. LARGER SIZES AVAILABLE UPON REQUEST.
9. WPR BASED ON PE 4710 FOR WATER AT 73° F.
10. MOLDED FITTINGS MFG BY AGRU, PERFORMANCE PIPE, CENTRAL PLASTICS.
11. PIG BARS INSTALLED UPON REQUEST.
CONFIDENTIAL NOTICE / CONTROLLED DOCUMENT
<small>*Dissemination of this information contained herein is prohibited*</small>



<h1>SECOR</h1>	TITLE: MOLDED TEE			
	17321 GROESCHKE ROAD HOUSTON, TX. 77084 PH. # 281-556-1661 FAX# 281-556-1683	DATE: 06/01/15	DRAWN BY: PATRICK O'GRADY	CHECKED BY: JUSTIN KEYS