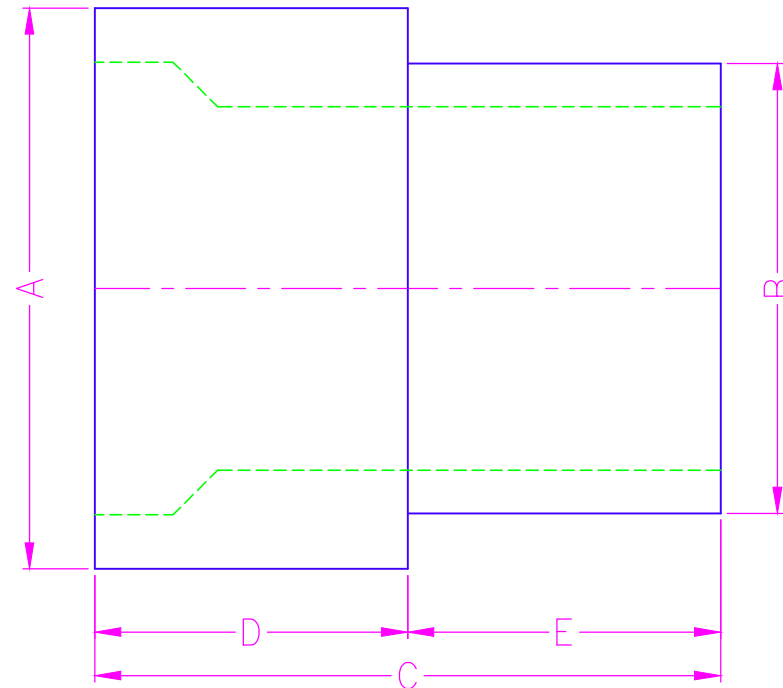


NOMINAL SIZE	SDR	APPROXIMATE DIMENSIONS / WEIGHT					
		WPR	A	B	C	D	E
		7	335	10 3/4	8 5/8	12	6
9	252						
11	200						
17	125						
12 X 10	7	335	12 3/4	10 3/4	14	7	7
	9	252					
	11	200					
	17	125					
14 X 12	7	335	14	12 3/4	14	7	7
	9	252					
	11	200					
	17	125					
16 X 14	7	335	16	14	14	7	7
	9	252					
	11	200					
	17	125					
18 X 16	7	335	18	16	14	7	7
	9	252					
	11	200					
	17	125					
20 X 18	7	335	20	18	14	7	7
	9	252					
	11	200					
	17	125					
22 X 20	7	335	22	20	14	7	7
	9	252					
	11	200					
	17	125					
24 X 20	-	-	24	20	18	9	9
	-	-					
	11	200					
24 X 22	7	335	26	24	18	9	9
	9	252					
	11	200					
	17	125					

REVISION HISTORY			
REV	DESCRIPTION	DATE	NAME

- NOTES**
- TOLERANCES +/- 2".
  - ANGLE TOLERANCES +/- 2.0'.
  - MADE FROM HDPE SIZE SPECIFIC PIPE.
  - FOLLOW INDUSTRY STANDARD FUSION PROCEDURES.
  - FOLLOW INDUSTRY STANDARD QUALITY PROCEDURES.
  - CUSTOM DESIGN AVAILABLE.
  - IF SPECIFIC DIMENSIONS NEEDED, PLEASE CALL.
  - LARGER SIZES AVAILABLE UPON REQUEST.
  - WPR BASED ON PE 4710 FOR WATER AT 73° F.
  - MOLDED FITTINGS MFG BY AGRU, PERFORMANCE PIPE, CENTRAL PLASTICS.
- CONFIDENTIAL NOTICE / CONTROLLED DOCUMENT**  
 \*Dissemination of this information contained herein is prohibited\*



<b>SECOR</b>	TITLE: REDUCER			
	17321 GROESCHKE ROAD HOUSTON, TX. 77084 PH. # 281-556-1661 FAX# 281-556-1683	DATE: 07/07/15	DRAWN BY: PATRICK O'GRADY	CHECKED BY: JUSTIN KEYS