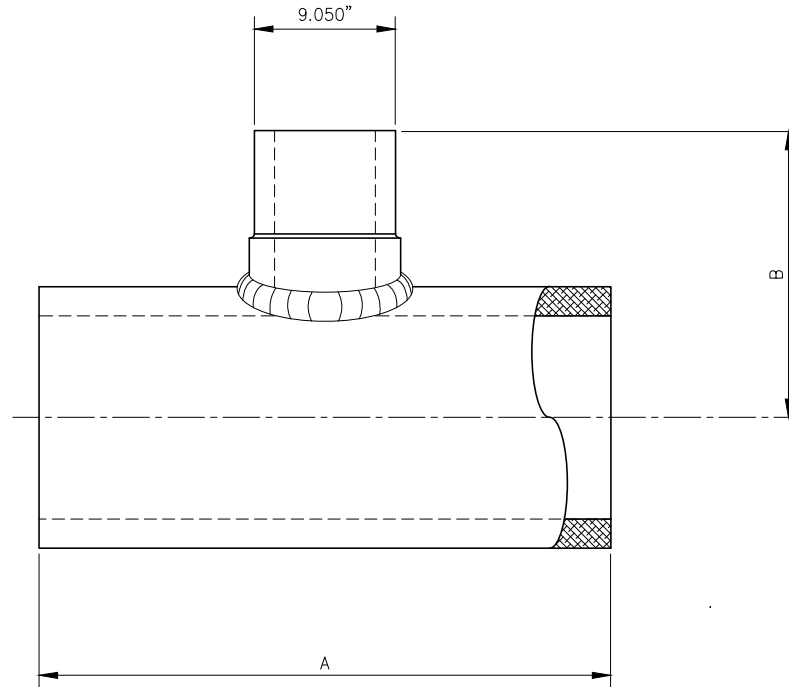


**DIMENSIONS**

SIZE DIPS	MAIN O.D.	A	B
16"x8"	17.40	30.00	20.70
18"x8"	19.50	30.00	21.75
20"x8"	21.60	30.00	22.80
24"x8"	25.80	30.00	23.90



**8" OUTLET  
BRANCH SADDLE TEE**  
SCALE: NTS

**NOTES**

1. ALL DIMENSIONS ARE IN INCHES.
2. FITTINGS MADE IN ACCORDANCE WITH FM APPROVAL STANDARD CLASS 1613, "APPROVAL STANDARD FOR POLYETHYLENE (PE) PIPE AND FITTINGS FOR UNDERGROUND FIRE PROTECTION SERVICE."
3. FITTINGS ARE FABRICATED FROM FM APPROVED PIPE MANUFACTURERS. PIPE WILL BE RESIN PE4710, MEETING ASTM D3350 CELL CLASSIFICATION 445574C FOR BLACK OR 445574E FOR COLOR STRIPES.
4. FITTINGS MEET ASTM F2206: STANDARD SPECIFICATION OF FM CL200S OF BUTT-FUSED POLYETHYLENE.
5. FITTINGS MEET ASTM D3261 FOR BUTT HEAT FUSION OF POLYETHYLENE PLASTIC FITTINGS FOR POLYETHYLENE PLASTIC PIPE AND TUBING.
6. FITTINGS ARE FABRICATED IN ACCORDANCE TO ASTM F2620 STANDARD FUSION PROCEDURES.
7. FITTINGS .
8. WPR BASED ON RESIN PE4710 FOR WATER AT 73° F.
9. DIMENSIONAL TOLERANCES: +/- 2".
10. ANGLE TOLERANCES: +/- 2.0'.

REV	DESCRIPTION	DATE	NAME
A	ISSUED FOR CLIENT REVIEW	-	CMG

**SECOR**

17321 GROESCHKE ROAD HOUSTON, TX. 77084  
PH.# 281-556-1661 FAX# 281-556-1683

**CONFIDENTIAL NOTICE / CONTROLLED DOCUMENT**  
\*Dissemination of this information contained herein is prohibited\*

TITLE: **SECOR  
DIPS FM CL335  
BRANCH SADDLE TEE - 8" OUTLET**

DATE	DRAWN BY	CHECKED BY	DRAWING NO.	REV
05/07/24	CMG	JN	-	A