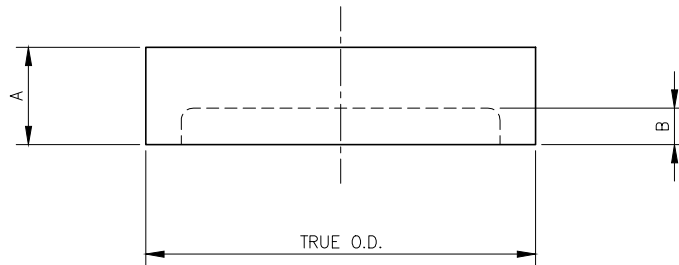


DIMENSIONS

SIZE IPS	TRUE O.D.	A	B
4	4.50	4.00	1.00
6	6.625	4.00	1.00
8	8.625	4.00	1.00
10	10.75	4.00	1.00
12	12.75	4.00	1.00
14	14.00	4.00	1.00
16	16.00	4.00	1.00
18	18.00	4.00	1.00
20	20.00	4.00	1.00
22	22.00	6.00	2.00
24	24.00	6.00	2.00
30	30.00	6.00	2.00
36	36.00	6.00	2.00



END CAP
SCALE: 1 1/2"=1'-0"

NOTES

1. ALL DIMENSIONS ARE IN INCHES.
2. FITTINGS ARE MANUFACTURED FROM PE4710, MEETING ASTM D3350 CELL CLASSIFICATION 445574C FOR BLACK OR 445574E FOR COLOR STRIPES.
3. FITTINGS MEET ASTM F2206: STANDARD SPECIFICATION OF IPS FABRICATED FITTINGS OF BUTT-FUSED POLYETHYLENE.
4. FITTINGS MEET ASTM D3261 FOR BUTT HEAT FUSION OF POLYETHYLENE PLASTIC FITTINGS FOR POLYETHYLENE PLASTIC PIPE AND TUBING.
5. FITTINGS ARE FABRICATED IN ACCORDANCE TO ASTM F2620 STANDARD FUSION PROCEDURES.
6. WPR BASED ON RESIN PE4710 FOR WATER AT 73° F.
7. DIMENSIONAL TOLERANCES: +/- .2".
8. ANGLE TOLERANCES: +/- 2.0'.

REV	DESCRIPTION	DATE	NAME
A	ISSUED FOR CLIENT REVIEW	-	CMG

SECOR

17321 GROESCHKE ROAD HOUSTON, TX. 77084
PH.# 281-556-1661 FAX# 281-556-1683

CONFIDENTIAL NOTICE / CONTROLLED DOCUMENT
Dissemination of this information contained herein is prohibited

TITLE: SECOR IPS FABRICATED FITTING END CAP				
DATE	DRAWN BY	CHECKED BY	DRAWING NO.	REV
10/15/20	CMG	-	-	A

SDR	WPR
7	336
9	252
11	200
17	126