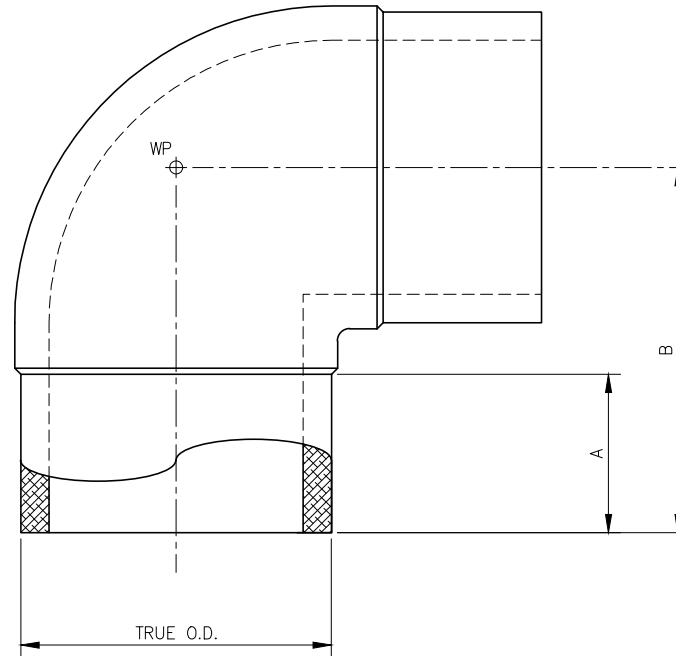


DIMENSIONS					
SIZE IPS	SDR	WPR	TRUE O.D.	A	B
2	7	336	2.375	2.81	4.50
	9	252		2.81	4.50
	11	200		2.81	4.68
	17	126		2.81	4.50
3	7	336	3.375	3.00	5.13
	9	252		3.00	5.13
	11	200		3.16	5.99
	17	126		3.16	5.99
4	7	336	4.50	3.00	5.75
	9	252		3.00	5.75
	11	200		3.87	6.90
	17	126		3.16	6.87
6	7	336	6.625	4.38	9.00
	9	252		4.38	9.00
	11	200		4.64	9.18
	17	126		4.64	9.18
8	7	336	8.625	6.00	12.00
	9	252		6.00	12.00
	11	200		6.33	11.95
	17	126		6.33	11.95
10	7	336	10.75	—	—
	9	252		6.00	13.25
	11	200		6.00	13.25
	17	126		6.00	13.25
12	7	336	12.75	—	—
	9	252		7.50	15.88
	11	200		7.50	15.88
	17	126		7.50	15.88



90° ELBOW
SCALE: NTS

NOTES

- ALL DIMENSIONS ARE IN INCHES.
- FITTINGS ARE MANUFACTURED AND TESTED TO THE REQUIREMENTS OF ASTM D2513 AND ASTM D2683.
- FITTINGS ARE MOLDED FROM VIRGIN BLACK HIGH DENSITY RESIN IN ACCORDANCE WITH ASTM D3350.
- FITTINGS MEET AWWA C906 TESTING REQUIREMENTS.
- FITTINGS ARE ASTM D3261 AND NSF-61 APPROVED.
- FITTINGS PRESSURE RATED FOR NATURAL GAS AND POTABLE WATER.
- DIMENSIONAL TOLERANCE: +/- 2".
- ANGLE TOLERANCES: +/- 2.0'.

REV	DESCRIPTION	DATE	NAME
A	ISSUED FOR CLIENT REVIEW	—	CMG
SECOR			
17321 GROESCHKE ROAD HOUSTON, TX. 77084 PH.# 281-556-1661 FAX# 281-556-1683			
CONFIDENTIAL NOTICE / CONTROLLED DOCUMENT *Dissemination of this information contained herein is prohibited*			
TITLE: SECOR IPS MOLDED FITTING 90° ELBOW			
DATE	DRAWN BY	CHECKED BY	DRAWING NO. REV
10/15/20	CMG	—	— A