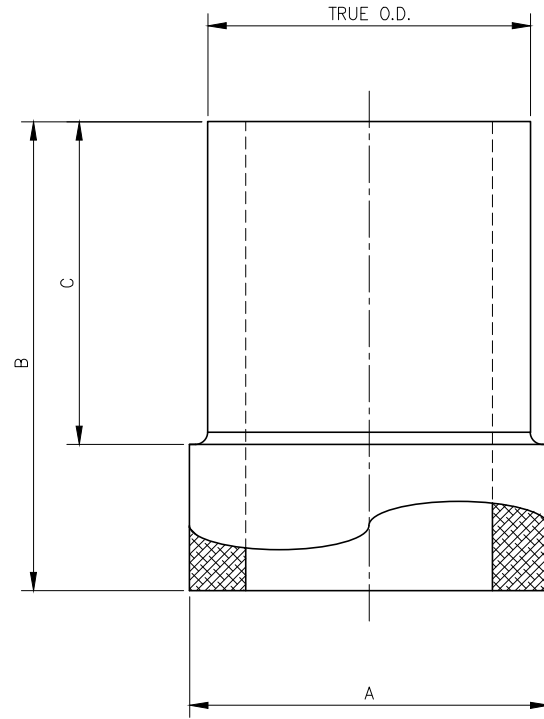


DIMENSIONS						
SIZE IPS	SDR	WPR	TRUE O.D.	A	B	C
1	7	336	1.315	—	—	—
	9	252		1.445	3.58	3.05
	11	200		1.445	3.58	3.05
	17	126		1.445	3.58	3.05
1.25	7	336	1.66	2.00	6.00	5.23
	9	252		2.00	6.00	5.23
	11	200		2.00	6.00	5.23
	17	126		2.00	6.00	5.23
1.50	7	336	1.90	2.20	7.50	6.28
	9	252		2.20	7.50	6.28
	11	200		2.20	7.50	6.28
	17	126		2.20	7.50	6.28
2	7	336	2.375	2.65	7.60	5.85
	9	252		2.65	7.60	5.85
	11	200		2.65	7.60	5.85
	17	126		2.65	7.60	5.85
3	7	336	3.375	4.00	5.88	4.88
	9	252		4.00	5.88	4.88
	11	200		4.00	5.88	4.88
	17	126		4.00	5.88	4.88
4	7	336	4.50	5.00	7.50	4.80
	9	252		5.00	7.50	4.80
	11	200		5.00	7.50	4.80
	17	126		5.00	7.50	4.80
6	7	336	6.625	7.38	9.90	6.63
	9	252		7.38	9.90	6.63
	11	200		7.38	9.90	6.63
	17	126		7.38	9.90	6.63
8	7	336	8.625	9.25	11.00	6.58
	9	252		9.25	11.00	6.58
	11	200		9.25	11.00	6.58
	17	126		9.25	11.00	6.58



BRANCH SADDLE
SCALE: NTS

- NOTES**
1. ALL DIMENSIONS ARE IN INCHES.
 2. FITTINGS ARE MANUFACTURED AND TESTED TO THE REQUIREMENTS OF ASTM D2513 AND ASTM D2683.
 3. FITTINGS ARE MOLDED FROM VIRGIN BLACK HIGH DENSITY RESIN IN ACCORDANCE WITH ASTM D3350.
 4. FITTINGS MEET AWWA C906 TESTING REQUIREMENTS.
 5. FITTINGS ARE ASTM D3261 AND NSF-61 APPROVED.
 6. FITTINGS PRESSURE RATED FOR NATURAL GAS AND POTABLE WATER.
 7. DIMENSIONAL TOLERANCE: +/- 2".
 8. ANGLE TOLERANCES: +/- 2.0'.

A	ISSUED FOR CLIENT REVIEW	—	CMG
REV	DESCRIPTION	DATE	NAME
SECOR			
17321 GROESCHKE ROAD HOUSTON, TX. 77084 PH.# 281-556-1661 FAX# 281-556-1683			
CONFIDENTIAL NOTICE / CONTROLLED DOCUMENT *Dissemination of this information contained herein is prohibited*			
TITLE: SECOR IPS MOLDED FITTING BRANCH SADDLE			
DATE	DRAWN BY	CHECKED BY	DRAWING NO. REV
10/15/20	CMG	—	— A