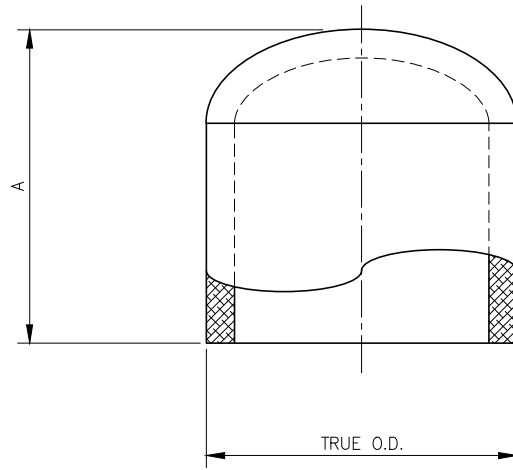


DIMENSIONS				
SIZE IPS	SDR	WPR	TRUE O.D.	A
2	7	336	2.375	2.93
	9	252		2.93
	11	200		2.95
	17	126		2.95
3	7	336	3.50	3.13
	9	252		3.13
	11	200		4.72
	17	126		4.72
4	7	336	4.50	5.31
	9	252		5.31
	11	200		5.31
	17	126		5.31
6	7	336	6.625	6.89
	9	252		6.89
	11	200		6.40
	17	126		6.40
8	7	336	8.625	-
	9	252		8.66
	11	200		7.95
	17	126		7.95
10	7	336	10.75	-
	9	252		-
	11	200		7.95
	17	126		7.95
12	7	336	12.75	-
	9	252		-
	11	200		11.95
	17	126		11.95



END CAP
SCALE: NTS

NOTES

- ALL DIMENSIONS ARE IN INCHES.
- FITTINGS ARE MANUFACTURED AND TESTED TO THE REQUIREMENTS OF ASTM D2513 AND ASTM D2683.
- FITTINGS ARE MOLDED FROM VIRGIN BLACK HIGH DENSITY RESIN IN ACCORDANCE WITH ASTM D3350.
- FITTINGS MEET AWWA C906 TESTING REQUIREMENTS.
- FITTINGS ARE ASTM D3261 AND NSF-61 APPROVED.
- FITTINGS PRESSURE RATED FOR NATURAL GAS AND POTABLE WATER.
- DIMENSIONAL TOLERANCE: +/- 2".
- ANGLE TOLERANCES: +/- 2.0'.

REV	DESCRIPTION	DATE	NAME
A	ISSUED FOR CLIENT REVIEW	-	CMG

SECOR

17321 GROESCHKE ROAD HOUSTON, TX. 77084
PH.# 281-556-1661 FAX# 281-556-1683

CONFIDENTIAL NOTICE / CONTROLLED DOCUMENT
Dissemination of this information contained herein is prohibited

TITLE: **SECOR
IPS MOLDED FITTING
END CAP**

DATE	DRAWN BY	CHECKED BY	DRAWING NO.	REV
10/15/20	CMG	-	-	A