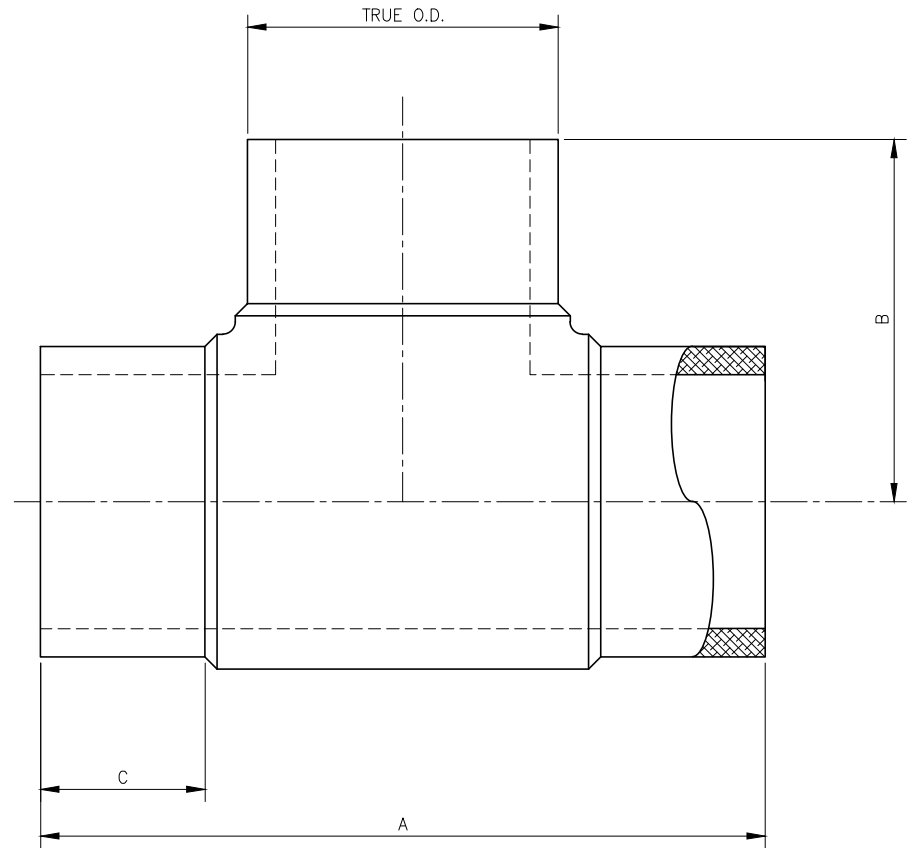


DIMENSIONS						
SIZE DIPS	SDR	WPR	TRUE O.D.	A	B	C
4	7	336	4.80	-	-	-
	9	252		-	-	-
	11	200		15.63	7.85	4.10
	17	126		-	-	-
6	7	336	6.90	-	-	-
	9	252		-	-	-
	11	200		19.34	9.67	5.10
	17	126		19.34	9.67	5.10
8	7	336	9.05	-	-	-
	9	252		-	-	-
	11	200		23.15	11.58	5.17
	17	126		23.15	11.58	5.17
10	7	336	11.10	-	-	-
	9	252		-	-	-
	11	200		26.50	13.25	6.00
	17	126		-	-	-
12	7	336	13.20	-	-	-
	9	252		-	-	-
	11	200		31.75	15.88	7.50
	17	126		-	-	-



EQUAL TEE
SCALE: NTS

NOTES

- ALL DIMENSIONS ARE IN INCHES.
- FITTINGS ARE MANUFACTURED AND TESTED TO THE REQUIREMENTS OF ASTM D2513 AND ASTM D2683.
- FITTINGS ARE MOLDED FROM VIRGIN BLACK HIGH DENSITY RESIN IN ACCORDANCE WITH ASTM D3350.
- FITTINGS MEET AWWA C906 TESTING REQUIREMENTS.
- FITTINGS ARE ASTM D3261 AND NSF-61 APPROVED.
- FITTINGS PRESSURE RATED FOR NATURAL GAS AND POTABLE WATER.
- DIMENSIONAL TOLERANCE: +/- .2".
- ANGLE TOLERANCES: +/- 2.0'.

REV	DESCRIPTION	DATE	NAME
A	ISSUED FOR CLIENT REVIEW	-	CMG
SECOR			
17321 GROESCHKE ROAD HOUSTON, TX. 77084 PH.# 281-556-1661 FAX# 281-556-1683			
CONFIDENTIAL NOTICE / CONTROLLED DOCUMENT *Dissemination of this information contained herein is prohibited*			
TITLE: SECOR DIPS MOLDED FITTING EQUAL TEE			
DATE	DRAWN BY	CHECKED BY	DRAWING NO. REV
10/15/20	CMG	-	- A