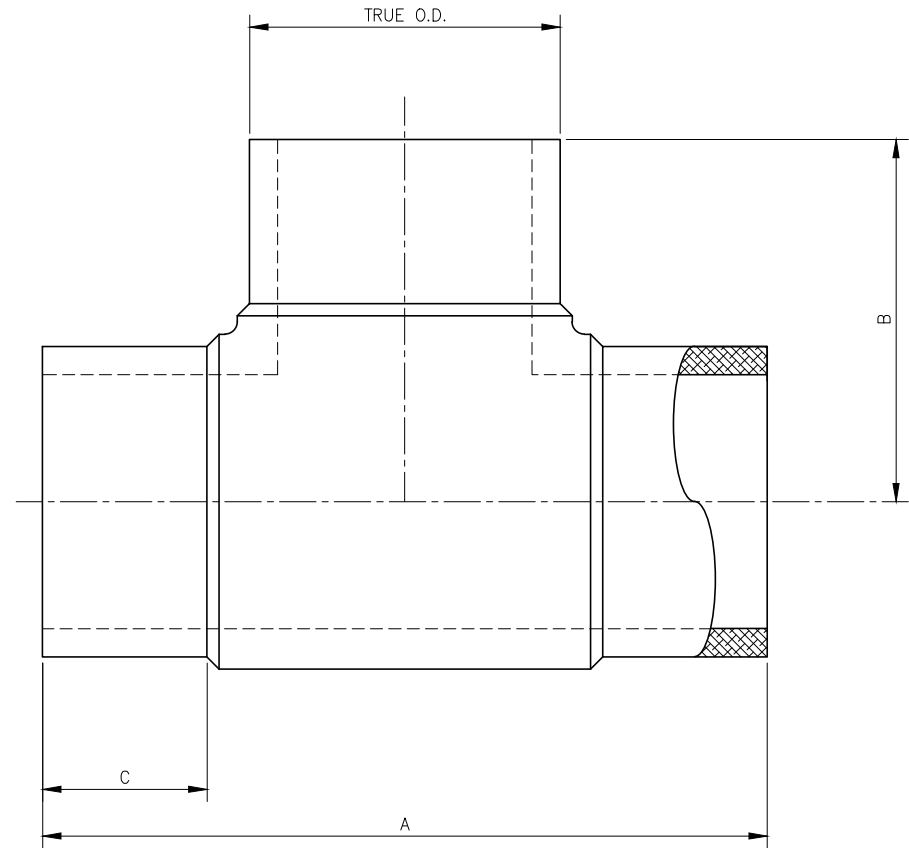


DIMENSIONS						
SIZE IPS	SDR	WPR	TRUE O.D.	A	B	C
2	7	336	2.375	9.36	4.75	2.81
	9	252		9.36	4.75	2.81
	11	200		9.28	4.61	2.54
	17	126		9.28	4.61	2.54
3	7	336	3.375	10.26	5.13	3.00
	9	252		10.26	5.13	2.90
	11	200		11.98	5.99	3.16
	17	126		11.98	5.99	3.16
4	7	336	4.50	11.60	5.60	3.00
	9	252		11.20	5.60	3.00
	11	200		14.60	7.30	3.90
	17	126		14.60	7.30	3.90
6	7	336	6.625	18.00	9.00	4.38
	9	252		18.00	9.00	4.38
	11	200		18.00	9.00	4.89
	17	126		18.00	9.00	4.89
8	7	336	8.625	24.00	12.00	6.00
	9	252		24.00	12.00	6.00
	11	200		24.00	12.00	6.19
	17	126		24.00	12.00	6.19
10	7	336	10.75	25.63	12.81	5.55
	9	252		26.50	13.25	6.00
	11	200		26.50	13.25	6.00
	17	126		26.50	13.25	6.00
12	7	336	12.75	-	-	-
	9	252		31.75	15.88	7.50
	11	200		31.75	15.88	7.50
	17	126		31.75	15.88	7.50



EQUAL TEE
SCALE: NTS

NOTES

- ALL DIMENSIONS ARE IN INCHES.
- FITTINGS ARE MANUFACTURED AND TESTED TO THE REQUIREMENTS OF ASTM D2513 AND ASTM D2683.
- FITTINGS ARE MOLDED FROM VIRGIN BLACK HIGH DENSITY RESIN IN ACCORDANCE WITH ASTM D3350.
- FITTINGS MEET AWWA C906 TESTING REQUIREMENTS.
- FITTINGS ARE ASTM D3261 AND NSF-61 APPROVED.
- FITTINGS PRESSURE RATED FOR NATURAL GAS AND POTABLE WATER.
- DIMENSIONAL TOLERANCE: +/- 2".
- ANGLE TOLERANCES: +/- 2.0'.

A	ISSUED FOR CLIENT REVIEW	-	CMG
REV	DESCRIPTION	DATE	NAME
SECOR			
17321 GROESCHKE ROAD HOUSTON, TX. 77084 PH.# 281-556-1661 FAX# 281-556-1683			
CONFIDENTIAL NOTICE / CONTROLLED DOCUMENT *Dissemination of this information contained herein is prohibited*			
TITLE: SECOR IPS MOLDED FITTING EQUAL TEE			
DATE	DRAWN BY	CHECKED BY	DRAWING NO. REV
10/15/20	CMG	-	- A